

# Morice TSA

## Archaeological Overview Assessment



Rick Budhwa, MA  
Crossroads Cultural Resource Management  
[www.crossroadscrm.com](http://www.crossroadscrm.com)

# Introduction

- Definition of Archaeology
  - Study of past human behaviour through the study of material remains (and other related sources of information)
- Traditional Use, Cultural Heritage
- Nature of CHR – NON-RENEWABLE
- Minimalist Strategies

# Objectives

1. Library and records search of ethnographic, archaeological and historic documents
2. Conduct interviews and consultation with individuals having knowledge of archaeological resources in the study areas
3. Prepare an overview assessment report as described in the Appendix A of the British Columbia Archaeological Impact Assessment Guidelines
4. Utilize available attribute information and local criteria to map the potential occurrence of archaeological resources; \*\*
5. Prepare and deliver extension materials for practitioners.

## Objectives (cont')\*\*

- An archaeological overview assessment ("AOA") is not an archaeological potential model.
- An AOA is a stage in the overall archaeological process, and may guide the development of an archaeological potential model.
- The archaeological potential map in this project was created for the purposes of *facilitating* resource management decisions regarding cultural resource management. It also provides the foundation for the more substantial process of creating an overall predictive model.

# Methodology

- This Project was completed in 5 phases:
  - Phase I: Library and records search
  - Phase II: Interviews and consultation
  - Phase III: Synthesis and mapping
  - Phase IV: Report preparation
  - Phase V: Ratification and peer review

# Phase I – Library and Records Search

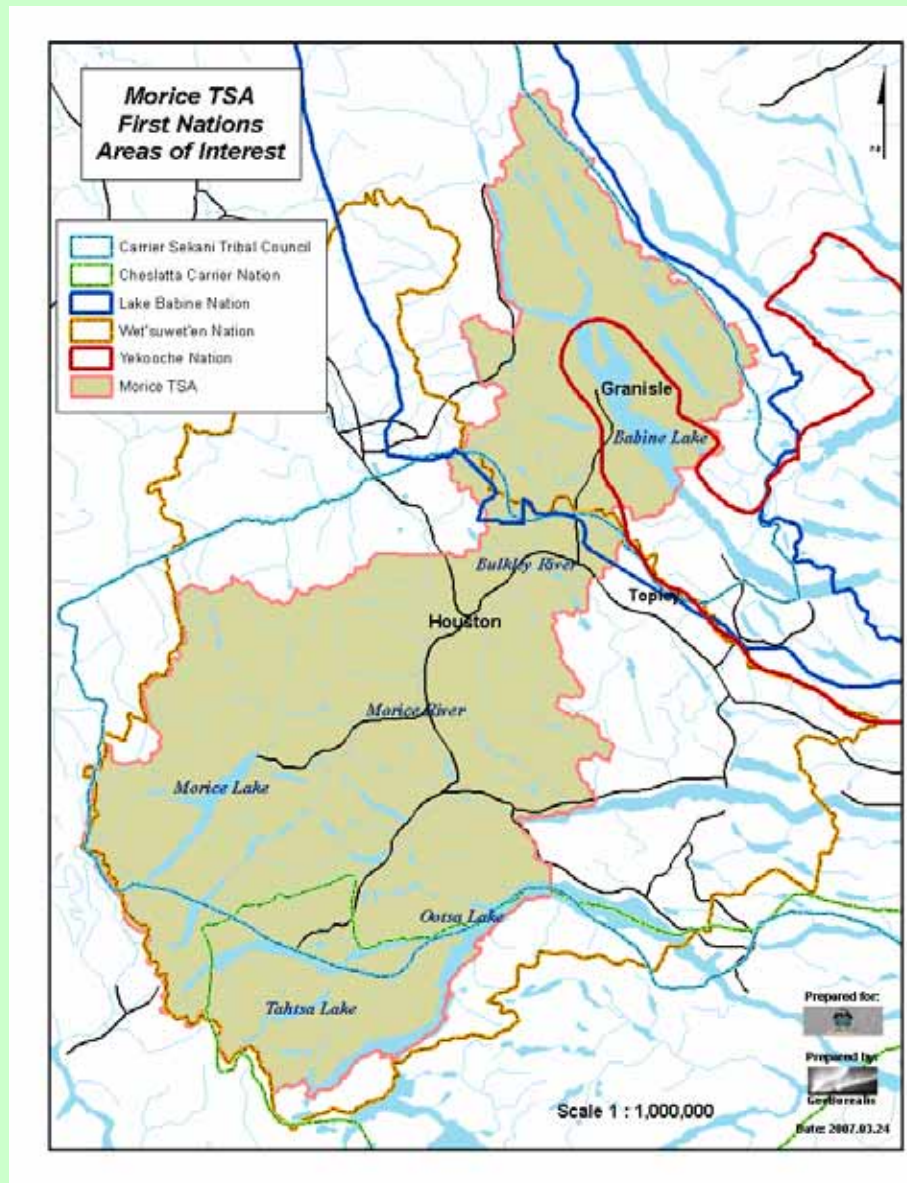
- records including the B.C. Archaeological Site Inventory, Remote Access to Archaeological Data ("RAAD"), legal land survey records, and other relevant records and inventory files;
- previous archaeological and ethnographic investigations in the study area and adjacent areas;
- relevant information from published and unpublished sources such as local and regional history<sup>\*\*</sup>, prehistory and ethnography;
- relevant paleoecological studies to assess past environmental conditions that may have influenced cultural adaptations; and
- air photographs and geomorphological and pedological information as an aid for assessing the potential for human habitation.

# Phase II – Interviews and Consultation

- All First Nations with traditional territorial claims within the Morice TSA were contacted to participate in this project.
  1. Burns Lake Band;
  2. Cheslatta Carrier Nation;
  3. Fort Babine Band (Wit'at);
  4. Lake Babine Nation (Natoot'en)
  5. Nee Tahi Buhn Band;
  6. Office of the Nedo'ats Hereditary Chiefs;
  7. Office of the Wet'suwet'en;
  8. Skin Tyee Band;
  9. Tachek Band;
  10. Wet'suwet'en First Nation; and
  11. Yekooche First Nation.

# First Nations Territories

Within the Morice TSA



## Phase II (cont'): Interviews and Consultation

- Each FNs organization contacted directly
- Unable to participate due to extreme weather conditions (except OW, whom declined for political reasons)
- Appropriate First Nations families researched and consulted
- Appropriate non-native individuals researched and consulted

# Phase III – Synthesis and Mapping

- Through research and consultation with a representative group of resource managers, First Nations groups and cultural scientists, the following geographic and environmental features were assessed as variables for predicting the potential of archaeological sites:
  - Forest Cover
  - Fish and Mammal Distribution
  - Structural Geology
  - Terrain/ecosystems
  - Raised Landforms
  - Proximity to Known Archaeological Sites\*\*
  - Proximity to Water
  - Elevation
  - Slope
  - Aspect

## Phase III (cont') — Proximity to Known Archaeological Sites

- Prior use as a variable for the prediction of archaeological sites
- Inherently biased as low percentage of archaeological investigation has occurred in the Morice TSA
- De-emphasizes the significance of traditional use

## Phase III (cont') — Database and GIS

- Creation of cultural heritage database for the Morice TSA
- Inclusive of traditional use and oral information\* \*
- Production of mapset

## Phase IV — Report Preparation

- Multi-disciplinary and cross-cultural approach

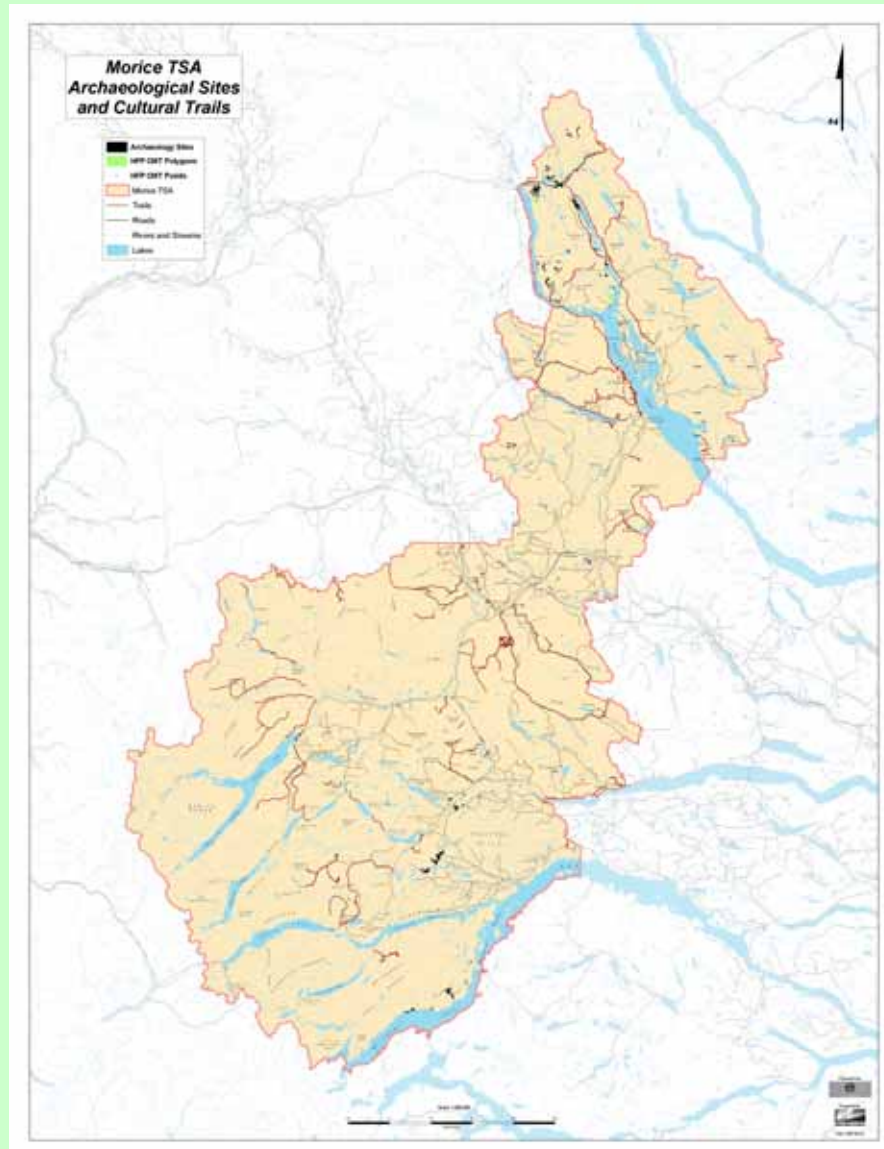
## Phase V — Ratification and Peer Review

- Quality assurance and technical review
- Archaeological consulting agencies
- Aboriginal agencies (technical and political)

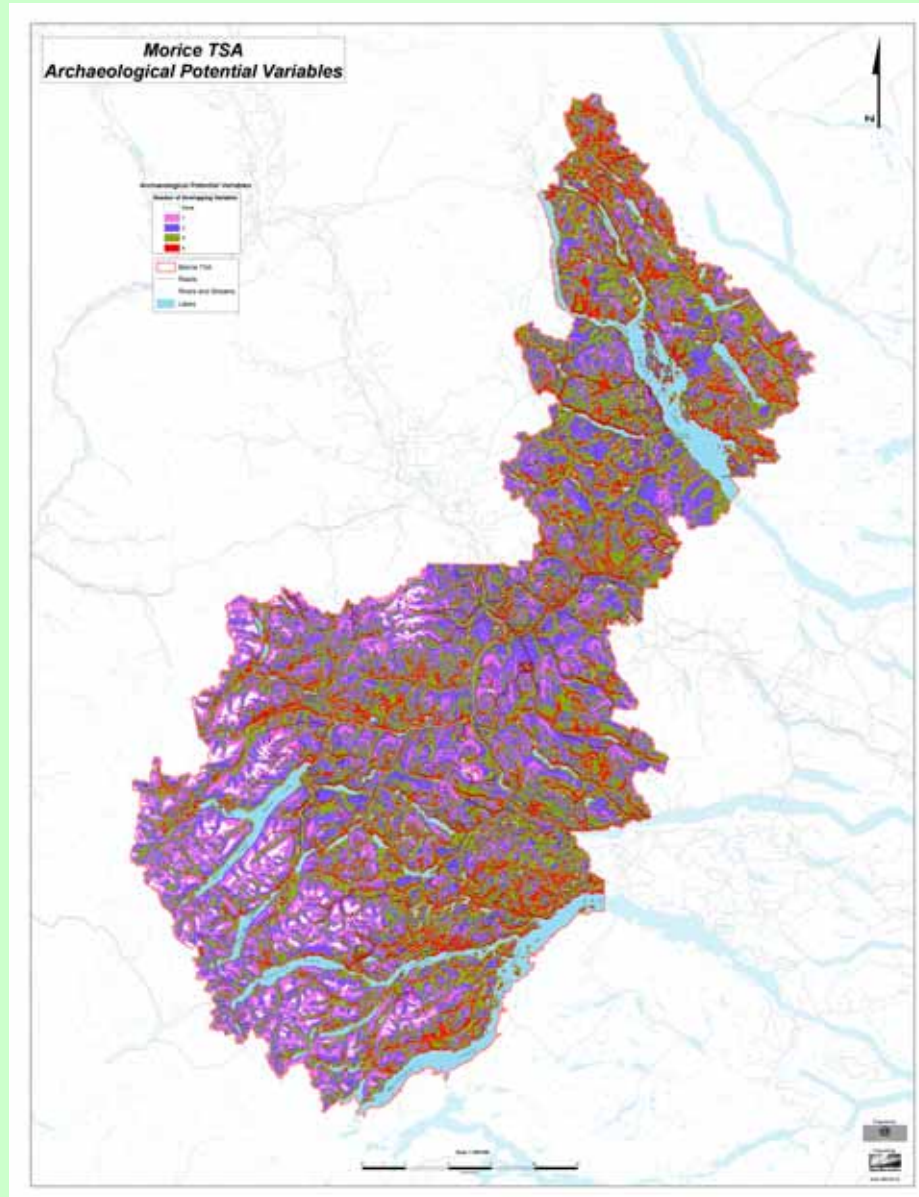
# Results

- Acquisition and coalescence of archaeological and cultural heritage data
- Creation of related database (558 archaeological sites + trad use info)
- Traditional use and oral information
- Production of mapset
- Pattern and trend recognition (ex/ the majority of arch sites located adjacent to Morice River and Babine Lake)

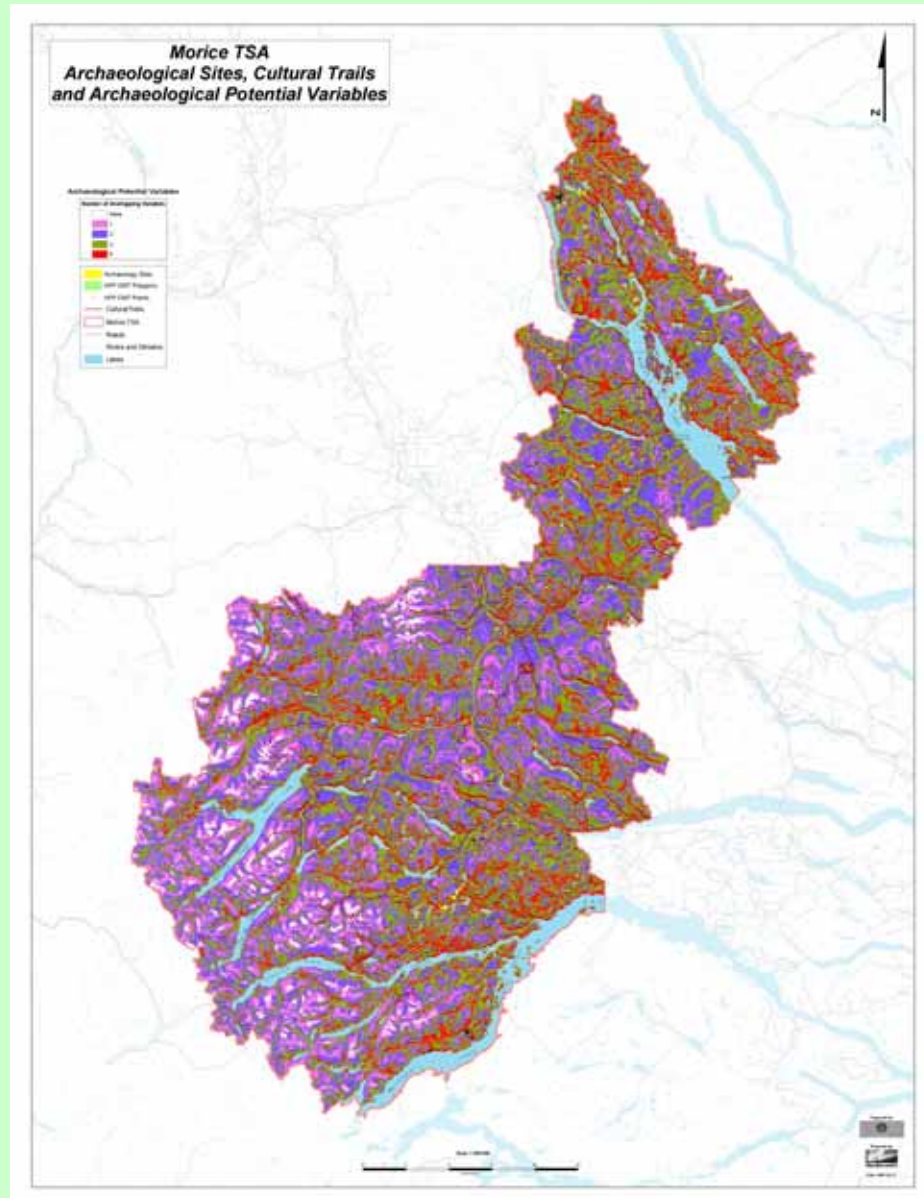
# Results (cont') — Archaeological Sites and Trails



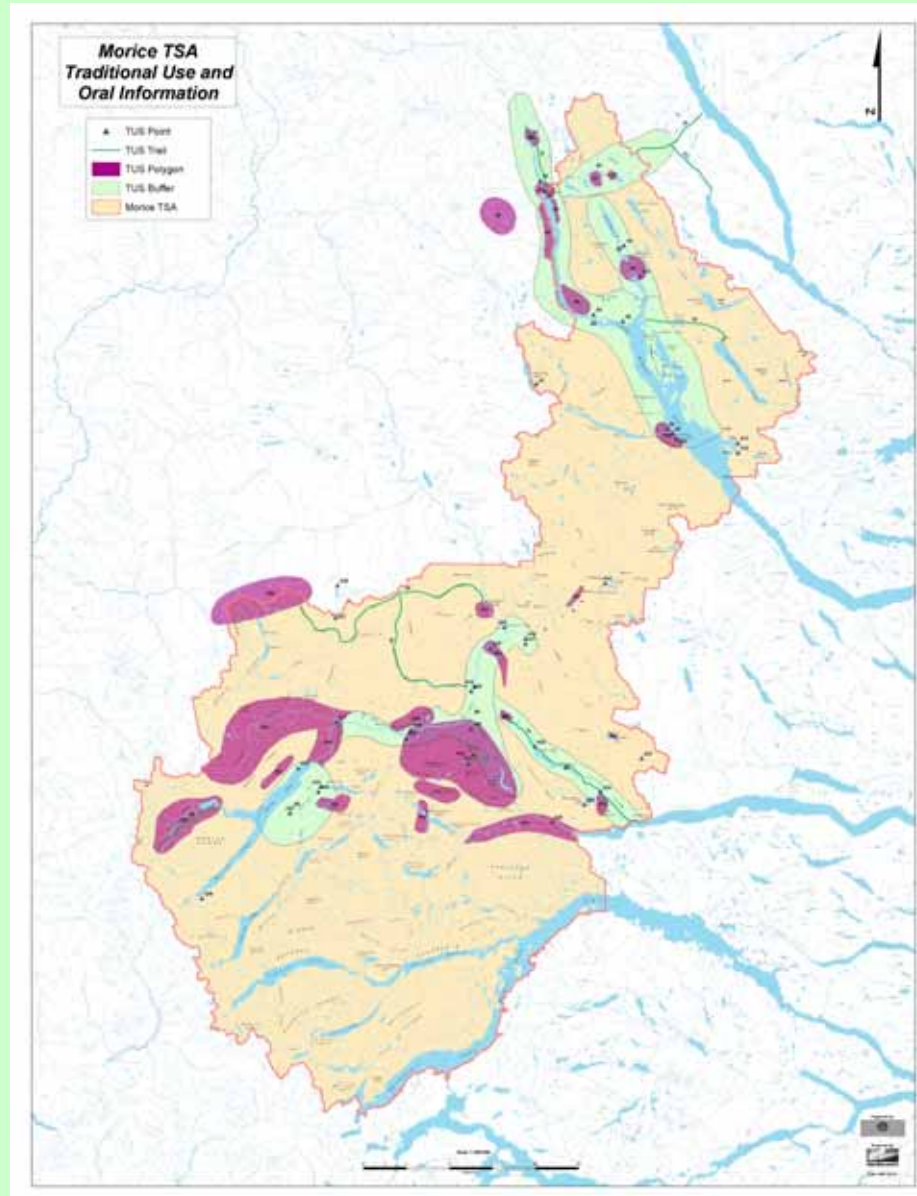
# Results (cont') — Archaeological Potential Variables



# Results (cont') — Archaeological Sites, Trails and Potential Variables



# Results (cont') — Traditional Use and Oral Information



# Discussion – Archaeological Potential Modeling

- Popular tool for industry, but only 1 component for decision making
- Biased
  - Based on non-native conceptions of what influences human behaviour
  - Does not account for intangible factors (ex/ religious and spiritual)
  - Assumes that all past peoples place equal importance on survival necessities and tactics (does not recognize diversity)
- Need broader approach, inclusive of traditional use information + direct and ongoing consultation with FNs

## Discussion (cont') — Traditional Use and Archaeology

- Not synonymous
- An archaeological site IS a traditional use site, but a traditional use site is NOT necessarily an archaeological site
- Traditional use information places archaeological sites in their proper physical and cultural context
- FNs do not make this distinction – all places are of 'cultural importance'
- This project places archaeological sites in traditional use contexts of those FNs who participated (1<sup>st</sup> time)

## Discussion (cont') — Bridging the Common Ground

- This project somewhat 'bridges' the AOA and predictive model approaches
- Uses a 'minimalist' strategy
- Recognizes the importance of traditional use and oral information (and utilizes that information)
- Encourages meaningful dialogue between Industry and FNs regarding CRM
- Open-ended and evolving

# Recommendations

1. The information contained within this Project is to be **considered with other supporting forms of information when making cultural heritage resource management decisions**
2. **Ground truthing of identified traditional use areas should be undertaken.** Ground truthing must also occur in areas where little or no archaeological information exists.
3. **Ongoing consultation with First Nations, local guides and long time residents of the Morice TSA is recommended** in order to ensure that the archaeological and traditional use record is as complete and updated as possible for the Morice TSA, thereby ensuring the integrity of the Morice TSA AOA database.
4. **Provide for resources and mechanisms to engage First Nations** if and when they are prepared to participate in the AOA.

Thank You for your Time.

