



# Bulkley Valley Centre

**for Natural Resources Research & Management**

**[www.bvcentre.ca](http://www.bvcentre.ca)**



# Purpose

- *advance scientific knowledge in the sustainability of natural resources* through high quality research.
- *conduct interdisciplinary research* on temperate, montane and boreal ecosystems, including their human dimensions, to advance understanding of the sustainable management of natural resources.
- *share research results* and offer demonstrations of sustainable management to the public.

# Challenge

- Meeting human need for natural resources
  - Wood fibre
  - Fish
  - Minerals
  - Agriculture
- Not degrading ecosystems
- Improving our knowledge of ecosystems

# Why the Bulkley Valley?

- Location
  - Junction of coast, transition and interior ecosystems
  - Range of ecosystems types
  - Large intact natural systems – predator – prey
- Concentration of experts
  - Scientific
  - management

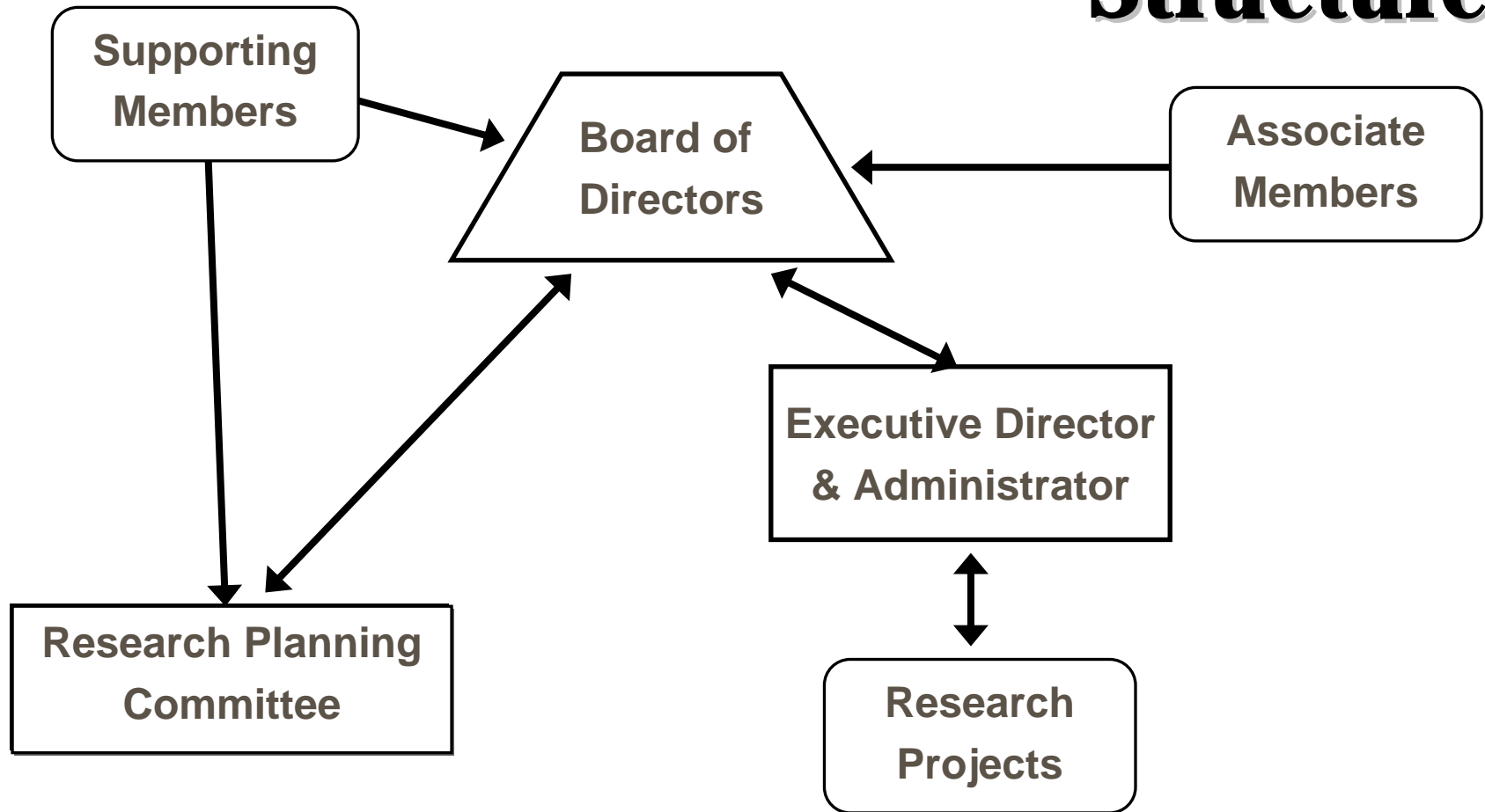
# Research Focus

- **Applied: Sustainable use of ecosystems**
- **Interdisciplinary: life sciences, earth sciences**
- **Collaborative: academia, industry, government, NGOs**
- **Scientifically rigorous & credible**
- **Addressing widely held priorities**

# Structure

- Not for profit society – established in 2002
- Open Membership
- Board of directors
  - Elected by membership
  - Strategies and policies
- Research Planning Committee
  - Sets priorities and identifies opportunities
  - Plans for achieving policy and objectives
- Employees
  - Executive Director – Kevin Kriese
  - Executive Administrator – Kirsteen Laing

# Structure



# **Board of Directors**

- **Strategic & policy direction**
- **Fiscal management**
- **Staffing**
- **RPC appointments**
- **Research program**
- **Small & efficient**

# **Research Planning Committee**

- **Sets research program priorities**
- **Identifies opportunities for collaboration**
- **Develops research proposals**
- **Advises Board of Directors**
- **Facilitated by staff**

# Centre Expertise

- forestry,
- fisheries,
- hydrology,
- land use planning,
- wildlife management,
- acid rock drainage,
- restoration ecology,
- conservation biology,
- geographic information systems,
- ecosystem-based resource management

# Funding

- **Society**
- **Membership dues**
- **Foundation grants**
- **Research project management fees**
- **Research Projects**
- **In-kind & financial member contributions**
- **Foundation grants**
- **Government grants**
- **Forest Investment Account**

# Participants

- Consultants: Biologist, foresters, geomorphologists, planning
- Industry: Canfor, West Fraser
- Government: Skeena Region MSRM and WLAP
- University of Northern BC
- Northwest Community College
- Forest Research Extension Partnership (FORREX)

# **Benefits for Universities**

- **Enhanced research funding**
- **Access: ideas, information, field sites, experience, facilities**
- **Opportunities for graduate students**
- **International exchange and collaboration**
- **Stability for long-term research**

# **Benefits for First Nations**

- Help address First Nation research needs
- Facilitate access to natural resource information and research
- Provide for research collaboration
- Provides opportunity to address sustainable resource management concerns

# **Benefits for Forest Industry**

- Meet certification requirements
- Access to information, facilities & expertise
- Address operational issues
- Enhance credibility
- Provide due diligence

# Benefits for Provincial Government

- Supports “science based decisions”
- P3 for resource research
- Improved integration with local research needs
- Avoids duplication of effort
- Access to outside research funding
- Enhances professional development

# **Benefits to Bulkley Valley Community**

- Retains well educated and skilled consultant, industry and government research capacity
- Contributes to work opportunities and local economy
- Provides joint marketing of local skills
- Promotes community stability
- Reinvests extraction revenues locally

## **Shared Benefits**

- Independent research - enhances credibility
- Facilitates research sharing & collaboration
- Ensures research presence in northwest BC to address local issues
- Helps disseminate research results
- Facilitates access to funding through charitable status

# Projects – Landscape Ecology

- Strategic Research Framework – Liz Osborne
- Marten, Flying Squirrels and Forest Fragmentation – Doug Steventon

# Projects – Stand Dynamics

- Growth of Canopy Trees in Complex Structured Mixed-Species Stands – Dave Coates
- Stand Dynamics in Southern Boreal Mixedwood Forests – Yves Bergeron
- Alternative Silvicultural Strategies – Dave Coates

# **Projects – Forest Management in Highly Sensitive Terrain**

- Forestry on Fans – Dave Wilford
- Skeena Islands Floodplain Dynamics – Adrian De Groot
- Monitoring Land Use Impacts in the Babine Watershed – Price and Daust

# **Projects – Forest Health and Invasive Species**

- **Impact of Stem Rusts – Alex Woods**

# Ongoing Collaborations

- adaptive management at McCully Creek,
- studies on interactions between resource development and goshawks, marbled murrelets, caribou, grizzly bears, wolverines, bull trout, steelhead;
- landscape ecology of bark beetles and forest diseases;
- introduced species on Haida Gwaii (Queen Charlotte Islands); and
- biology of marine birds.

# Long Term Research

- Date Creek Silviculture Systems Research Forest,
- the Pattern, Process and Productivity of Hypermaritime Forests (HyP<sup>3</sup>) project, and
- the Long-term Soil Productivity Study.

# Needs

- Ingenuity, experience, research and culture
- Maintain our ecosystems quality
- Efficient use of natural capital
- Transition to a culture of sustainability
- Mobilize and organize talented people

# Future for the Centre

- Delivery of current projects to demonstrate the Centre's high quality research
- Expand the membership base
- Collaborative proposals
  - Mountain Pine Beetle Initiative
  - FIA research projects
  - Emerging opportunities



[www.bvcentre.ca](http://www.bvcentre.ca)

**Bulkley Valley Centre** for Natural Resources Research & Management



**IFPA Knowledge Transfer Session**

**June 18, 2004**