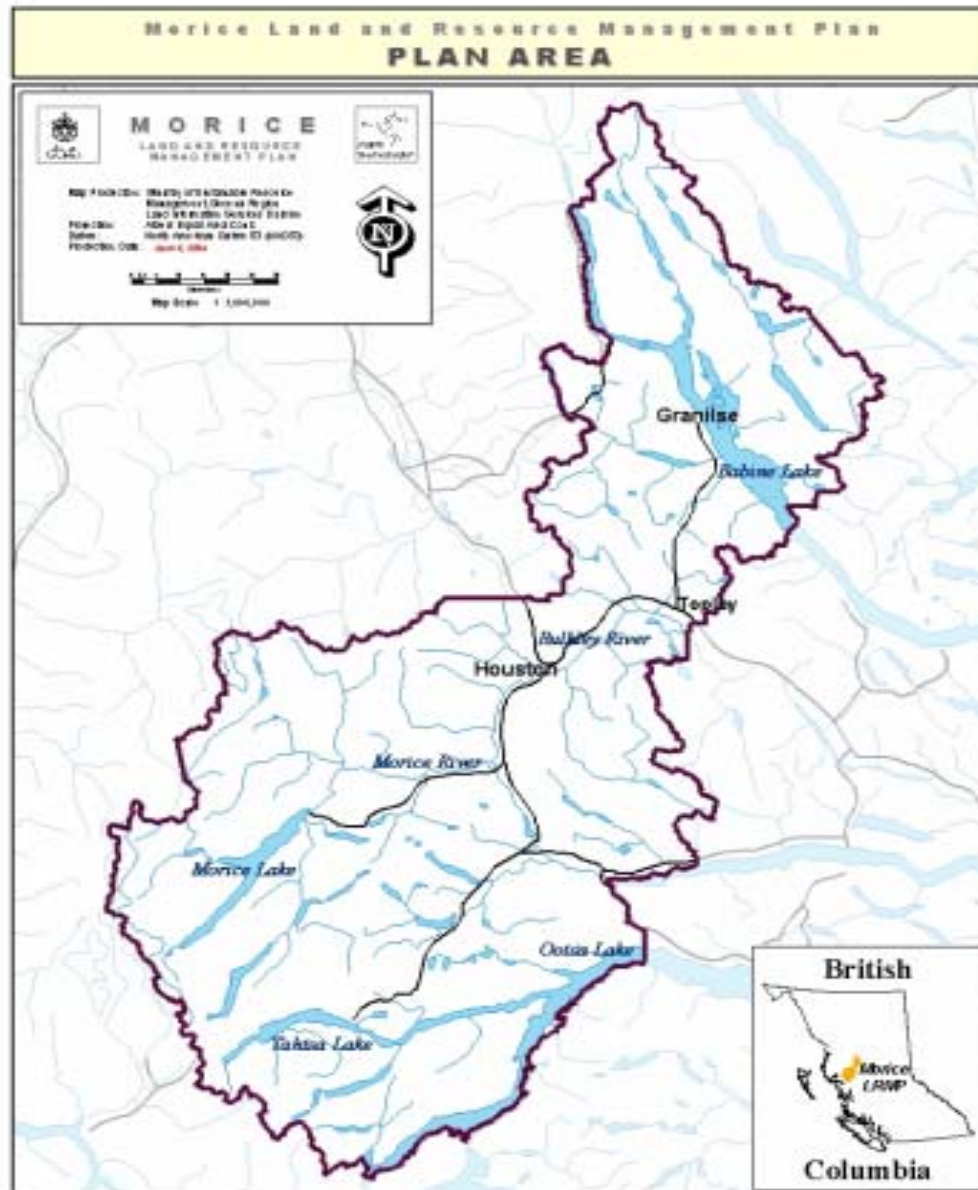


MORICE LAND AND RESOURCE MANAGEMENT PLAN

For Morice Lakes Innovative Forest
Practices Agreement
June 17, 2004

Morice LRMP Area



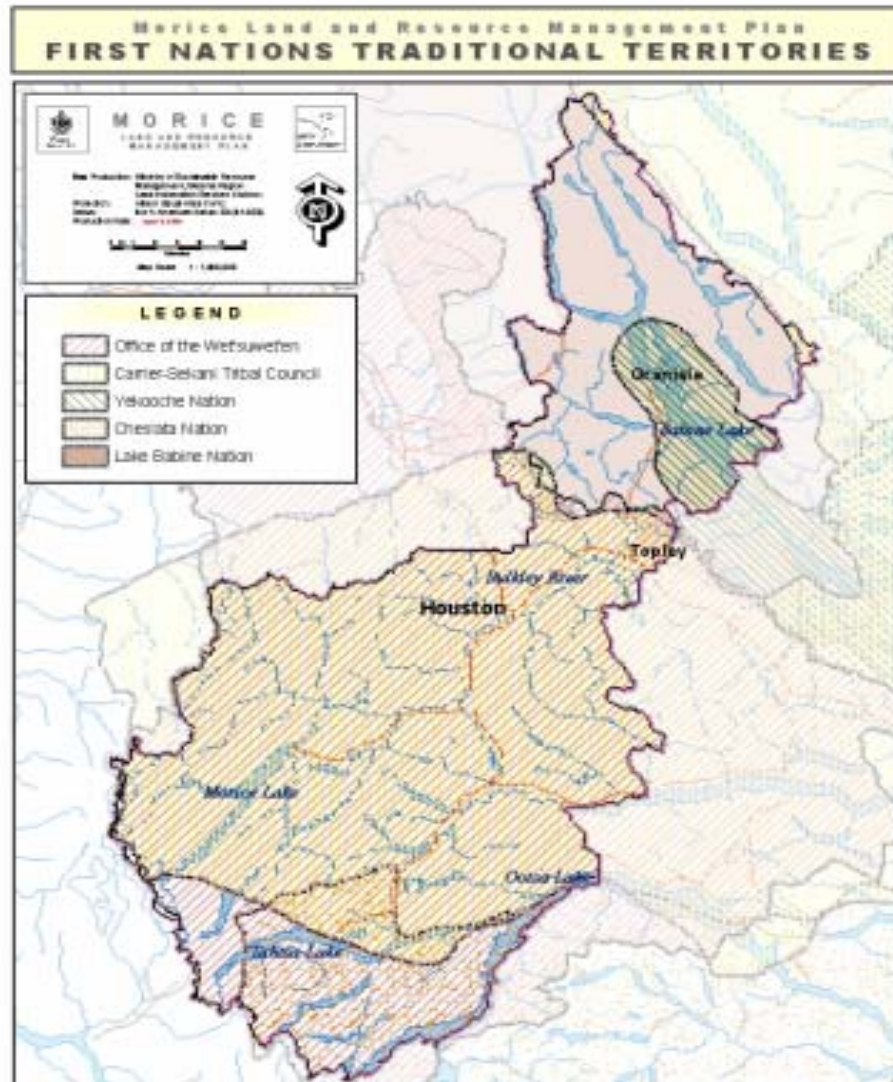
Process Background

- September 2001 - Preparation stage started
- May 2002 – Sectoral model endorsed - 17 member planning table
 - Two First Nations
 - Local and provincial government representation

Planning Table Membership

- Office of the Wet'suwet'en
- Lake Babine Nation
- Conservation and Environment
- Fish & Fish Habitat
- Forest Licensees
- Guide Outfitters/ Trappers
- Small Business
- Tourism
- Labour
- Local Government
- Local Sustainability
- Mining & Exploration
- Motorized Recreation
- Non-motorized/ Wilderness Recreation
- Provincial Government
- Agriculture
- Wildlife & Wildlife Habitat

First Nations Involved



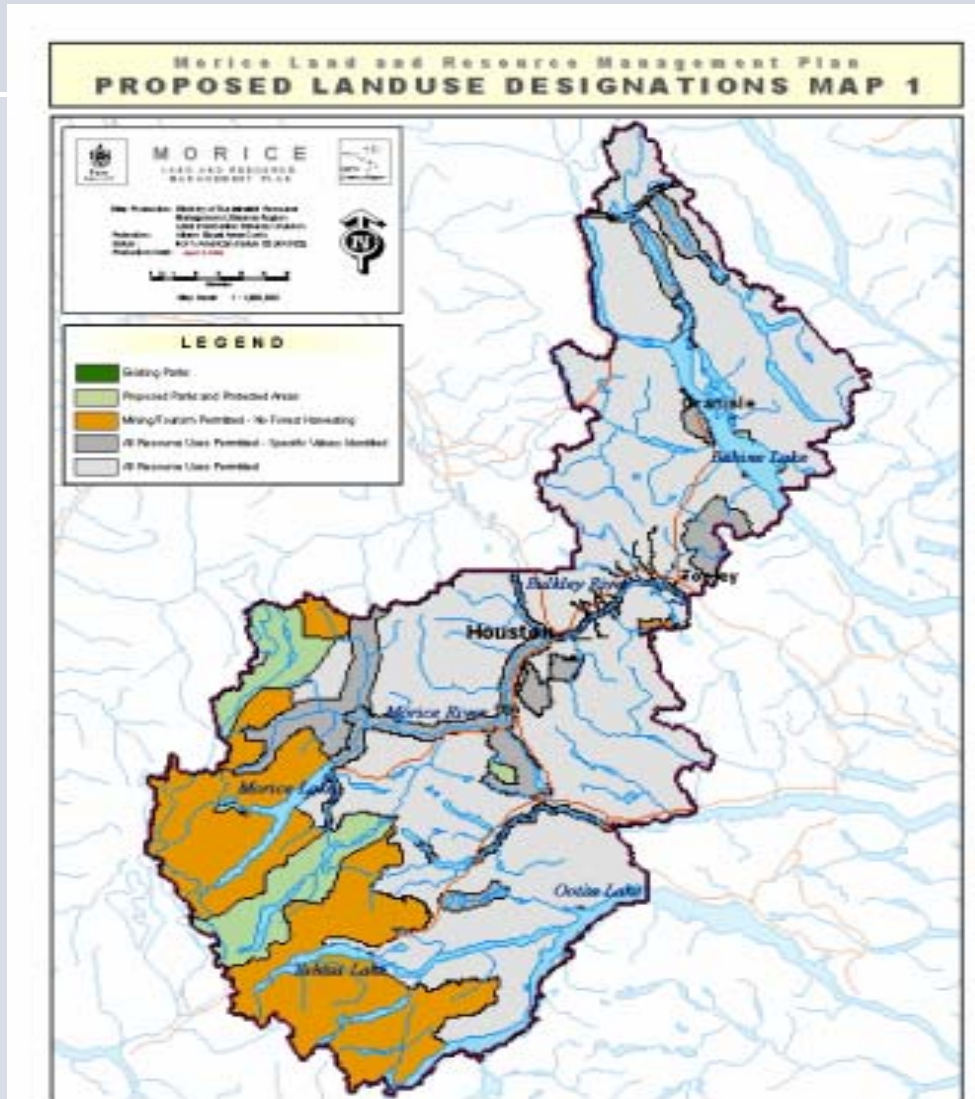
Process Background

- October 2002 – First of 18 Table meetings
- February 2004 – Full Table consensus
- March 2004 – Open Houses and Table endorsement of final land use recommendation

Proposed Land Use Designations

| | Total Plan Area | THLB |
|--------------------------------|-----------------|-------|
| ■ General Management Direction | 64.1 % | 85.2% |
| ■ Area Specific | 9.0% | 11.0% |
| – Special values identified | | |
| ■ Area Specific | 20.5% | 2.4% |
| – No commercial forestry | | |
| ■ Proposed Parks | 6.4% | 1.4% |
| ■ Current Parks | .04 % | 0.0% |

Morice LRMP Proposed Land Use Designations



Proposed Protected Areas

- 6 proposed protected areas
 - Atna Lake Ecological Reserve
 - Nanika/Kidprice
 - Burnie/Shea Lakes (Tazdli Wiyez Bin)
 - Nadina Mountain
 - Old Man Lake
 - Babine Lake Marine Parks
 - North Spit, Sanctuary Bay, Old Fort, Bear Island, Port Arthur, Sand Point, Long Island – Cottonwood Point, Wright's Bay- Wilkinson Bay

Proposed Protected Areas (cont.)

- 6.4% of plan area (96,200 ha)
 - 1.4% of THLB
 - 5.2% high metallic mineral potential
 - 41.7% high industrial mineral potential
 - 30% of high tourism potential
 - Includes significant cultural heritage areas
 - Also captures important recreation, wildlife values

Area Specific Areas – No Timber Harvesting

- 5 areas recommended
 - 48% of high tourism potential
 - 26.7% of high metallic mineral potential
 - 31.9% of high industrial mineral potential

Area Specific Areas – Special Values Identified

- 15 areas identified
- Focus on environmental, cultural, tourism and recreation values
- 11% of timber harvesting land base
- Available for timber harvesting
- Increased protection of First Nation cultural features

General Management Direction

- 85.1% of THLB – more certainty to the timber industry on the most valuable timber land
- Improved security for tourism recreation facilities and features

The Consensus: Implications

- Land use certainty with strong support from industry, community and local government
- First Nations benefits
 - cultural values maintained
 - involvement in the economy
- Improved environmental management
- Enhanced role for tourism and recreation in local economy
- Retention of 96.2% of the timber harvesting land base (THLB)
- Retention of 93.6% of the land base for mineral exploration and development

The Consensus: Implications

- Potential timber supply impacts:
 - 1.9% decline due to designations that exclude timber harvesting
 - 5.5% decline resulting from management strategies, can be mitigated through implementation
 - overlap visual areas with areas having conservation values
 - phase in conversion to agricultural land over time

Next Steps

- First Nations government-to-government discussions
- Final plan approval expected in fall 2004

Further Information

- <http://srmwww.gov.bc.ca/ske/lrmp/morice/>
- Ministry of Sustainable Resource Management
Bag 5000
Smithers, BC V0J 2N0
Phone: (250) 847-7260 or
Toll Free: 1 800 663-7867