

Gauging our Success from the Ground Up: SFM Indicator Reporting in the M&L IFPA

Dwight Scott Wolfe R.P.F., Tesera Systems Inc.



Objectives

Methods

Results

Continual Improvement

- ▶ Produce Technical Indicator Reports for each TSA as described in the SFM Plans;
- ▶ Produce a Public Report summarizing the status of indicators and action plans;
- ▶ Update indicator reporting Standard Operating Procedures (SOPs) & SFM Plans as required; and
- ▶ Prepare and deliver extension materials.



Operational Indicators: supported by operational data.

Analysis Indicators: supported by spatial and temporal analysis.

	Morice TSA	Lakes TSA
Operational	20	16
Analysis	20	17



Operational Indicators

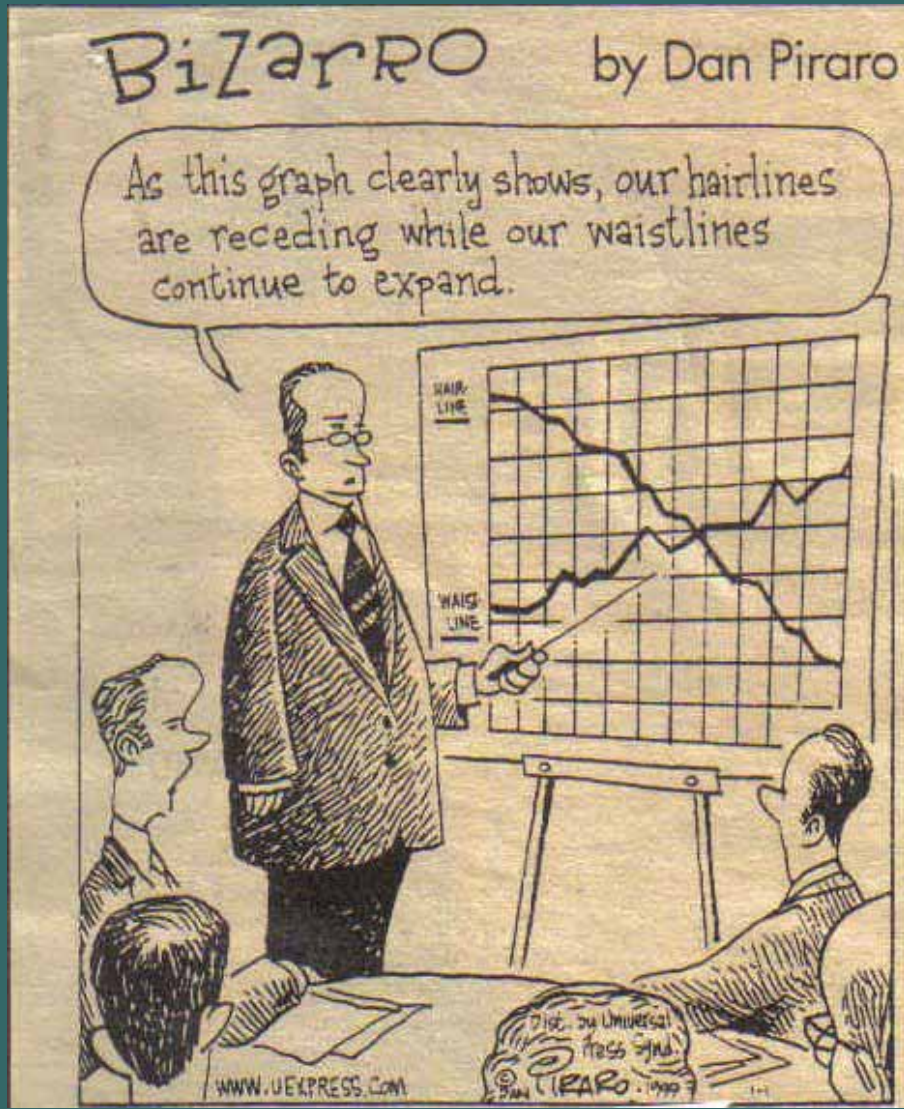
- ▶ Licensees used current SOPs, augmented by their in-house reporting procedures.
- ▶ Licensee monitoring results were compiled along with licensee recommendations for continual improvement.
- ▶ If targets were not met, licensees provided details and recommended actions.



Analysis Indicators

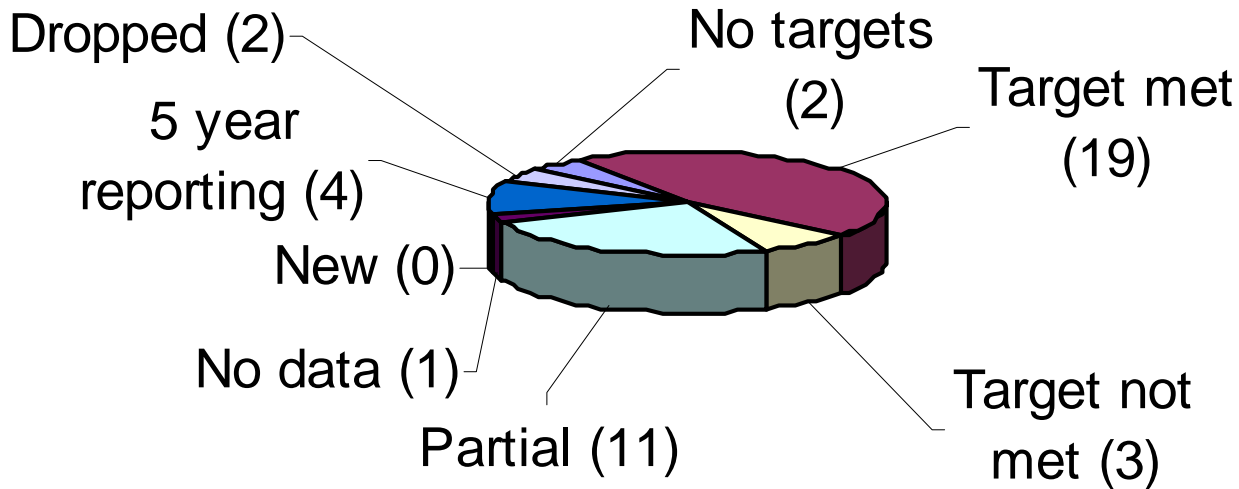
- ▶ Annual update information (i.e. harvest depletions, silviculture activity, etc.) compiled using data supplied by the Northwest Data Sharing Network (NWDSN).
- ▶ NWDSN data combined with analysis resultant data to generate the reporting summaries for the IFPA SFM analysis indicators.





ML-IFPA Indicator Reporting Categories

- ▶ Target met – as specified in the SFM Plan.
- ▶ Partial – at least one licensee has not met the target.
- ▶ No Targets – targets have not yet been established.
- ▶ No Data – data not available.
- ▶ 5 year reporting – being reported every 5 years.
- ▶ Target not met – as specified in the SFM Plan.
- ▶ New – new indicators added during this reporting period.
- ▶ Dropped – indicators that have been dropped during this reporting period.



Morice TSA SFM indicator reporting results

Target Met

- ▶ Number of communications by type by licensee
- ▶ Number of participation opportunities by opportunity type
- ▶ Number of aboriginal participation opportunities by licensee
- ▶ Number of continual improvement–related projects in the DFA by licensee
- ▶ Percentage of identified high hazard structures with action plans implemented by Licensee
- ▶ Percent seral stage distribution by non-timber tenure license by forest licensee

Target Met

- ▶ Percentage of AAC harvested by licensee
- ▶ Ratio of annual mill consumption to AAC apportionment harvested by licensee
- ▶ Percentage of blocks meeting NAR disturbance objectives by licensee
- ▶ Percent of gross forest area converted to permanent access by licensee



Target Met

- ▶ Percentage of forest management commitments completed on time resulting from consultations regarding non-timber features and interests by licensee
- ▶ Ratio of capital expenditures to depreciation by licensee



Target Met

- ▶ Area of arable land (Ha/5yr.) within contributing and non-contributing forest converted to agricultural lease by agricultural unit in licensee operating area
- ▶ Benefits directed into local communities by licensee
- ▶ Road density by ecosystem and wildlife value class by licensee
- ▶ Public Advisory Group established and maintained according to approved Terms of Reference

Target Met

- ▶ Percentage of comments receiving response by type by licensee
- ▶ Percent of Fires Burning During Poor or Fair Air Quality Conditions by Licensee
- ▶ Ecosystem Carbon Storage by tonnes/ha. by Licensee



Partial

- ▶ Percent area less than 3m in height in stream RMAs by Sensitive Watershed by licensee.
 - ▶ Canfor met the target in 48 of 63 watersheds.
 - ▶ HFP met the target in 27 of 36 watersheds.
 - ▶ BCTS met the target in 17 of 20 watersheds.
- ▶ Percent of area less than VEG by VQO class by Scenic Area by licensee
 - ▶ Due to changes in Operating Areas, the licensees are now harvesting in Scenic Areas that didn't previously have targets established.

Partial

- ▶ Percent area in suitable forage opportunity class by LU by licensee.
 - ▶ Canfor and BCTS met their targets. HFP met its target in all but one Landscape Unit (Thautil).
- ▶ Percent area retained in WTR by LU by BEC by licensee
- ▶ Percent forest in each patch type by patch size class by BEC Variant by licensee
 - ▶ Canfor and HFP met their targets. BCTS met its target in all but one BEC Variant (SBS dk).

Partial

- ▶ Percentage of total goods and services provided by local vendors by licensee
 - ▶ All licensees met target with the exception of BCTS. This is not expected to have any adverse implication in meeting the objective.
- ▶ Percent seral stage distribution by ecosystem and wildlife value class by licensee
 - ▶ All targets have been met with the exception of BCTS in “Mountain Goat Key Habitats”.

Partial

- ▶ Percent Seral Stage Distribution by LRMP Biodiversity Emphasis Area / BEC Combination by licensee
 - ▶ All targets have been met with the exception of BCTS in 1 of 20 categories.
- ▶ Road density by recreation class by licensee
 - ▶ All targets have been met with the exception of HFP in “Fly-in fishing (existing and proposed)”.

Partial

- ▶ Road density index (RDI) by sensitive watershed by licensee
 - ▶ Canfor met the target in 41 of 56 watersheds.
 - ▶ HFP met the target in 24 of 37 watersheds.
 - ▶ BCTS met the target in 15 of 16 watersheds.
- ▶ Percent of Harvesting by Licensee where Recommended Operational Guidelines have been applied to Retain Structural Habitat Elements
 - ▶ Canfor met the target.
 - ▶ HFP and BCTS did not meet the target.

Target not met

- ▶ Percent of area less than VEG by recreation class by licensee
- ▶ Percent species composition of harvest volume by licensee
 - ▶ No adverse implications to not meeting the Balsam and Spruce targets. The focus for this indicator is meeting the pine targets to address the MPB.
- ▶ Percent of harvest area in Mountain Pine Bark Beetle attacked stands by licensee
 - ▶ This is a new indicator and is not required to be reported until 2007.

No Targets

- ▶ Percent area in Aspen Leading Stands within Existing and Potential Range by LU by licensee
- ▶ Area treated by treatment type by licensee

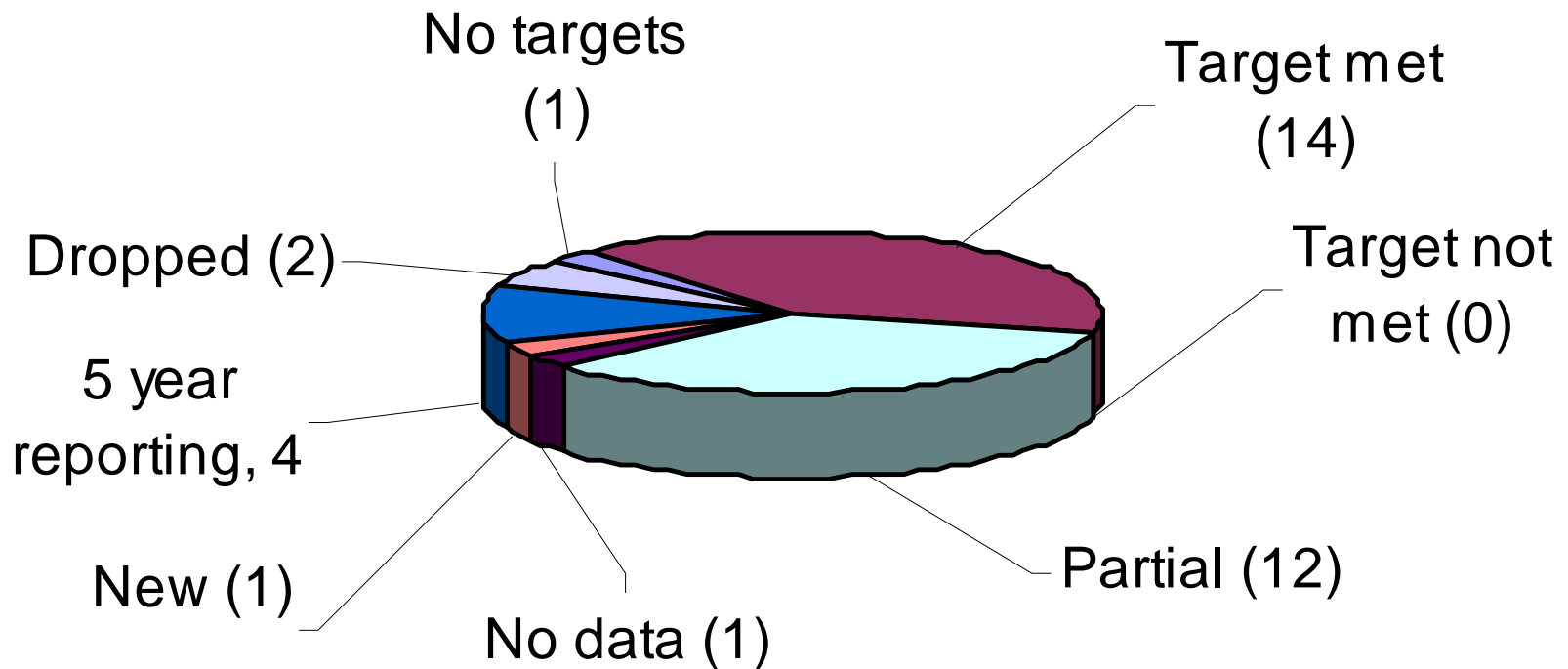
No Data

- ▶ Percent total area by wildlife value class by LU by licensee

Dropped

- ▶ Percent harvest volume by harvest method by licensee
 - ▶ This was not considered to be an effective indicator since there is such a small proportion of the TSA that is suitable for cable harvesting (i.e. < 1)
- ▶ Percent of detected beetle infested tree removed / destroyed within one year by licensee
 - ▶ This indicator was not considered effective as a measurement to assess achievement toward the objective due to the progression of the beetle.

Lakes TSA SFM indicator reporting results



Target Met

- ▶ Number of communications by type by licensee
- ▶ Number of participation opportunities by opportunity type
- ▶ Percent of area less than VEG by recreation class by licensee
- ▶ Percentage of total goods and services provided by local vendors by licensee
- ▶ Percent of gross forest area converted to permanent access by licensee

Target Met

- ▶ Percentage of forest management commitments completed on time resulting from consultations regarding non-timber features and interests by licensee
- ▶ Percent species composition of harvest volume by licensee
- ▶ Area harvested (ha/yr) within the agriculture / settlement RMZ by licensee
- ▶ Benefits directed into local communities by licensee
- ▶ Road density by ecosystem and wildlife value class by licensee

Target Met

- ▶ Road density by recreation class by licensee
- ▶ Public Advisory Group established and maintained according to approved Terms of Reference
- ▶ Percentage of comments receiving response by type by licensee
- ▶ Ecosystem Carbon Storage by tonnes/ha. by Licensee



Partial

- ▶ Number of aboriginal participation opportunities by licensee
 - ▶ Canfor and BCTS met the target.
 - ▶ BFP did not meet the target.
- ▶ Percentage of AAC harvested by licensee
 - ▶ All licensees in the Lakes TSA met the target with the exception of BCTS.
 - ▶ The target will be met over the 5 year period.

Partial

- ▶ Percent area less than 3m in height in stream RMAs by Sensitive Watershed by licensee
 - ▶ BFP met the target in 11 of 13 watersheds.
 - ▶ FLSM met the target in 8 of 11 watersheds.
 - ▶ BCTS met the target in 10 of 14 watersheds.
- ▶ Percent of area less than VEG by VQO class by Scenic Area by licensee
- ▶ Percent area retained in WTPs by LU by BEC by licensee

Partial

- ▶ Percent forest in each patch type by patch size class by BEC zone by licensee
 - ▶ BFP did not meet its target.
 - ▶ BCTS met its target in all but two BEC Zones (Lakes North SRPP/SBS and Lakes North SRMP/ESSF).
 - ▶ FLSM met its target in all but one BEC Zones (Lakes South SRMP/SBS).
- ▶ Percent seral stage distribution by non-timber tenure license by forest licensee
 - ▶ Licensees met their targets except for “All Range Licenses Combined”.

Partial

- ▶ Percentage of blocks meeting NAR disturbance objectives by licensee
 - ▶ All licensees met targets with the exception of BCTS.
 - ▶ For BCTS, there are 2 cutblocks that have not achieved objectives for dispersed soil disturbance and disturbance within roadside processing area.

Partial

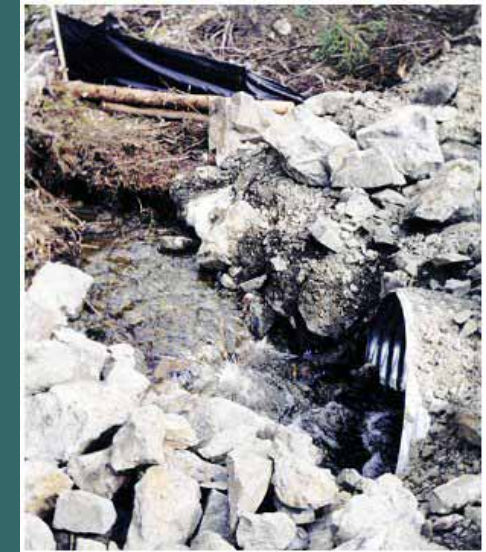
- ▶ Percent seral stage distribution by ecosystem and wildlife value class
 - ▶ All targets have been met with the exception of “Klaytunkut and Sutherland Grizzly Zones” and Moose Winter Range.
- ▶ Percent seral stage distribution by LU by BEC by licensee
 - ▶ BCTS met the targets in 12 of 17 categories.
 - ▶ BFP met the targets in 12 of 16 categories.
 - ▶ FLSM met the targets in 16 of 22 categories.

Partial

- ▶ Road density index (RDI) by sensitive watershed by licensee
 - ▶ BFP met the target in 6 of 16 watersheds.
 - ▶ BCTS met the target in 10 of 16 watersheds.
 - ▶ FLSM met the target in 7 of 16 watersheds.
- ▶ Percent of Harvesting by Licensee where Recommended Operational Guidelines have been applied to Retain Structural Habitat Elements
 - ▶ Target met for Canfor and BFP.
 - ▶ FLSM and BCTS to begin reporting in 2006-2007

New

- ▶ Percentage of identified high hazard structures with action plans implemented by Licensee



No Targets

- ▶ Area treated by treatment type by licensee

No Data

- ▶ Percent total area by wildlife value class by LU by licensee

Dropped

- ▶ Percent harvest volume by harvest method by licensee
 - ▶ This was not considered to be an effective indicator since there is such a small proportion of the TSA that is suitable for cable harvesting (i.e. < 1)
- ▶ Percent of harvest volume from beetle attacked stands by licensee
 - ▶ This indicator was not considered effective as a measurement to assess achievement toward the objective due to the progression of the beetle.

Remedial Action(s) Proposed

- ▶ **Analysis Indicators**
 - ▶ Review the analysis data for accuracy and completeness.
 - ▶ Review harvest plans to ensure they are not further impacting targets.
 - ▶ Conduct field level assessments as required.



Remedial Action(s) Proposed

- ▶ **Analysis Indicators**
 - ▶ **In Scenic Areas where a target has been exceeded, licensees will confirm that a Visual Impact Assessment (VIA) has been completed.**
 - ▶ **Licensees will recommend new targets based on revised Operating Areas and review with the PAG when the 2006 monitoring report is presented.**



What's Working Well

- ▶ Collaboration – other organizations / agencies using IFPA databases, analysis results and indicators
- ▶ Multiple levels of planning – IFPA Participants using results for operational planning applications.
- ▶ Public Advisory Process – Involved in reviewing indicator monitoring results and improving SFM process.



Opportunities for improvement

- ▶ **Data Quality – Still need to work through data quality and completeness issues for the datasets required for indicator reporting**
- ▶ **Reporting Timelines – Challenging to assemble data (at all levels) in time to meet reporting deadlines.**
- ▶ **Streamlining of Processes – Continuing to revise SOP's to be time efficient and cost effective while maintaining quality reporting.**

Acknowledgements

- IFPA Technical Committee
- Morice TSA Public Advisory Group
- Lakes TSA Public Advisory Group
- IFPA Partner Licensees
 - Canfor
 - Houston Forest Products
 - Babine Forest Products
 - Fraser Lake Sawmills
- BCTS – Babine Business Area



**For More Information
on the Morice & Lakes IFPA**

www.moricelakes-ifpa.com