

IFPA update...

News from the Morice & Lakes Innovative Forest Practices Agreement

In November 1999 BC's Minister of Forests signed an Innovative Forest Practices Agreement (IFPA) for the Morice and Lakes Timber Supply Areas in Northwestern BC. The Morice & Lakes IFPA is developing Sustainable Forest Management Plans using innovative approaches in public involvement, forest productivity and ecosystem-based management.

Web Sites Provide Key Resource Information



Location: www.moricelakes-ifpa.com

Site details: Provides overview information on the Morice & Lakes Innovative Forest Practices Agreement and houses all of its publications. If you want to find out more about the IFPA and project work completed, visit this site. Includes locator map, SFM planning background, pictures and perspectives of scenario planning team members, newsletters and news items.

Location: <http://tao.tesera.com:81/website/>

Site details: Shows location and distribution of key resource features in the Morice & Lakes Timber Supply Areas. The site uses ArcIMS, an internet map server for displaying GIS maps on the Web. Visitors to the site can choose from a number of resource categories and it generates an interactive map.

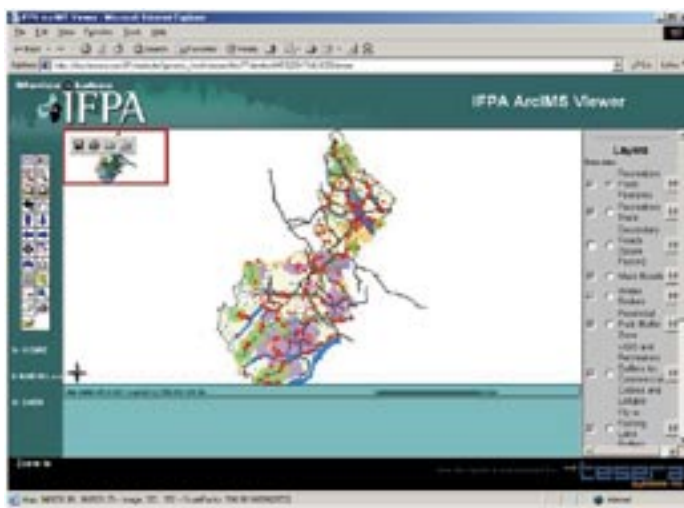
The M&L IFPA is making its presence felt in cyberspace, with two Web sites providing information for natural resource managers and the wider public.

The original site, located at www.moricelakes-ifpa.com and up and running for the past 18 months, has been substantially revised to incorporate dozens of project summaries, reports and presentations stemming from project work completed in 2002/2003.

"Our library of publications has grown, and we needed to revise the site to make it easier for people to access this information," said M&L IFPA communications coordinator Ritchie Morrison. According to Morrison, the site has been streamlined—the number of pages has actually been reduced—and PDF (Portable Document Format) files of project publications are available in an expanded publications section.

"This year alone we've published 20 project summaries in our three core program areas of SFM planning, ecosystem management and forest productivity," said Morrison.

The site is seeing more and more interest as time goes by. Morrison reports that during fiscal 2002/2003 the site received



continued on page 2



Extension and Communications

Knowledge Transfer Session Held in Granisle

The second annual Morice & Lakes IFPA Knowledge Transfer Session, held in Granisle on May 23rd, was well attended again this year by resource managers from around the region. Some 75 people packed the conference centre located at the Granisle Lakeside Lodge to hear 13 presentations on innovative projects undertaken during the past year in the Morice and Lakes Timber Supply Areas. Representatives from licensees, government ministries, First Nations and forestry consulting firms attended the event.

The goal of the session was to inform local resource managers and interested members of the public about project work completed by the initiative during the fiscal 2003/2003 year, which ended March 31, 2003. "The direct interaction between people interested in natural resource management is key," said Ritchie Morrison, communications coordinator for the agreement. "It's more effective sometimes to get away from computers and documents and communicate information directly. Not only do project consultants extend their findings out to people who can benefit from them, but the participants can ask questions."

Presentations were made in the core program areas of sustainable forest management planning, ecosystem management and forest productivity. Consultants making the presentations have worked locally



Participants at the 2003 M&L IFPA Knowledge Transfer Session

over the past year on a variety of resource management projects, from mountain goat collaring to problem forest type management. An update on the sustainable forest management (SFM) planning process in the IFPA was also provided.

"The session was worthwhile for me because I was interested in the outcomes of many of the projects that were presented and wanted to learn more about the IFPA" said Peter Tweedie, forestry manager with Tyhee Forestry Consultants Ltd. "The session also gave me some new ideas and confirmed some that I already had. On

top of this it was also a great opportunity to network with resource managers from throughout the region."

Sharing information from the IFPA to a wider audience is important, but according to M&L IFPA manager Jim Burbee, dialogue is another vital goal of the session. "As well as transferring knowledge from recent projects there were some great ideas coming from participants, particularly around creating effective partnerships," he said.

continued from page 1

Web Sites

some 47,000 hits and site visitation steadily increased from 2311 hits in April 2002 to 7910 hits in March 2003. Visitors are accessing a variety of publications, including the recently developed Sustainable Forest Management (SFM) plans for each TSA.

The SFM plans and supporting planning documents occupy a significant portion of the site. "We want our planning documents to be available for viewing by resource managers and the broader public," said M&L IFPA manager Jim Burbee.

Aside from the technical summaries and reports, the site provides overview information, newsletters, news stories,

planning updates, and scenario planning team perspectives and pictures.

An additional Web site showing map-based resource information in the Morice & Lakes IFPA planning area is also now online. The site provides a graphic interface that illustrates sustainable forest management planning efforts undertaken by the IFPA.

"This site is an innovative communications and knowledge transfer tool that has not been used in the resource sector to date," said Burbee.

The site uses ArcIMS, an internet map server for displaying GIS maps on the Web. Visitors to the site can choose from a number of resource categories—for instance, agriculture, wildlife or recreation

—and the site generates an interactive map showing the location and distribution of key features.

All map-based data layers generated by the M&L IFPA will be integrated into the new site. "It's an efficient way to review and deliver data layers required for the SFM plans," said Dwight Scott Wolfe, scenario planning coordinator for the M&L IFPA. Data from the Morice Timber Supply Area has been available on the site since May, 2003. Lakes TSA information is currently being added. Users can download a manual in PDF format at the site that outlines how to use the ArcIMS tools and functions. Visit the site at <http://tao.tesera.com:81/website/>.

Ecosystem Management

Ground-Breaking Wildlife Study Tracks High Speed Hawk

Local forest companies are looking skyward before developing their forest management plans with input from an important and far-reaching bird study in the Morice and Lakes area.

The study focuses on the Northern Goshawk, a raven-sized raptor that can swoop down on its prey—usually squirrels or rabbits—at speeds of up to 60 km/h. The bird is widely recognized as a species sensitive to forest development.

The study looks at goshawk populations, behaviour and habitat, and assesses impacts of forestry activities near active nesting areas. It also provides practical goshawk management guidelines for forest companies operating in the bird’s habitat.

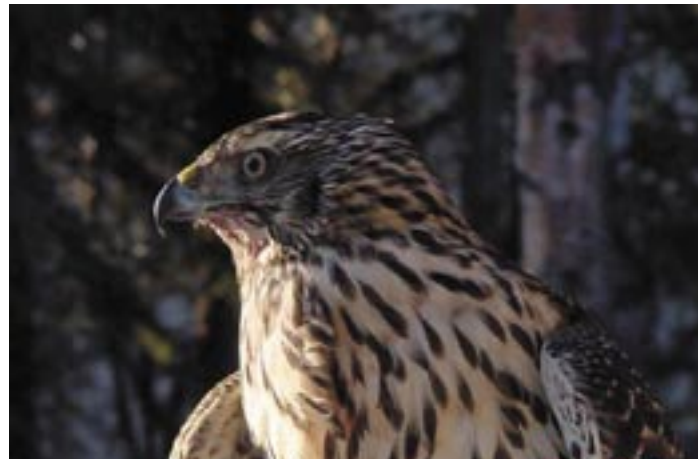
Todd Mahon, a Telkwa-based wildlife biologist who has studied the extraordinarily agile and aggressive bird for several years, conducted the 2002/03 portion of the study with funding from the Morice & Lakes IFPA through the province’s Forest Investment Account. Key members of Mahon’s team also include senior biologist Frank Doyle and field technician Rob Kelley.

The study involved finding and mapping nest sites to determine breeding habitat requirements as well as radio tagging of both adult and juvenile goshawks to track movement patterns and habitat selection at different times of the year. “Post-fledging areas for juvenile birds were a big forest management issue when the Forest

Practices Code Identified Wildlife Management Strategy first came out,” said Mahon, who has lived in the Bulkley Valley for the past 11 years. “Once the birds have fledged from the nest they continue to hang around the nest area for six weeks, during which time they develop physically and behaviourally, while still being fed by the adults.” As part of the study Mahon and his team have quantified the size and habitat requirements of the juveniles during this critical period, and developed tailored management recommendations for local forest companies.

An important concern for local forestry managers is the question of forest fragmentation and mature forest patch size. How much mature forest is required and how big does a patch of forest need to be to provide habitat for the bird? Does it need contiguous forest or does it fly across openings to access other forested areas? According to Mahon, these are some of the questions the study continues to explore.

Melissa Todd, senior wildlife biologist with Houston Forest Products sees tremendous value in the study. “We’re getting practical information we can use in our forest man-



agement planning,” said Todd. “We now have standard recommended practices for use in areas with goshawk nests.”

The study has a huge sample size—40 nest areas in the two Timber Supply Areas—and is considered a leading study of its type in North America. “With outstanding cooperation from local forest companies, and through provincial government funding, we have been able to address specific local knowledge gaps as well as make a significant contribution to the broader knowledge of goshawks and forest management,” said Mahon.

Busy Publishing Year For M&L IFPA

The M&L IFPA has been busy this year publishing documents for both print and Web distribution. In addition to some 20 project summaries, the agreement has posted a number of planning documents—including Version One of the Sustainable Forest Management Plans for the Lakes and Morice Timber Supply Areas—to its Web site. The site also features Powerpoint presentations and full reports from projects completed over the past two years. Project summaries published to July 2003 are listed to the right and on page four, grouped by the core program areas of SFM planning, forest productivity and ecosystem management.

Project Summaries - SFM Planning	Author	# Pages	Publication Date
Development of an Indicator Monitoring Protocol (#1 in series)	Tesera Systems Inc.	2	March 2002
The Sustainable Forest Management Plan: Public Involvement and Adaptive Management (#5 in series)	Tesera Systems Inc.	4	March 2002
Sustainable Forest Management Plan Version One (#14 in series)	Tesera Systems Inc.	4	March 2003
Indicator Monitoring Protocols (#18 in series)	Tesera Systems Inc.	4	April 2003
SFM Plan Resultant File: Data Preparation and Delivery (#23 in series)	Tesera Systems Inc.	4	April 2003
Development of Preliminary Socio-Economic Indicators (#25 in series)	Tesera Systems Inc.	4	May 2003
Northern Data Sharing Network Phase 2 (#28 in series)	Advanced GIS	4	May 2003
Communications and Extension: M&L IFPA Audiences, Media and Methods (#33 in series)	Tetrad Communications	4	June 2003

continued on page 4

continued from page 3

Publishing Efforts

Project Summaries - Forest Productivity	Author	# Pages	Publication Date
Problem Forest Type Rehabilitation Trial (#2 in series)	David Yole, M.Sc., P.Ag.	4	March 2002
Strategic Recommendations for a Growth and Yield Program for the Morice & Lakes IFPA Area (#3 in series)	J.S. Thrower & Associates Ltd.	4	March 2002
Genetic Improvement: Interactions with Silviculture and Disease (#4 in series)	Isabella Point Forestry Ltd.	4	March 2002
Determination of a Method to Realize the Incremental Volume Gain from Low Stump Harvesting (#6 in series)	Timberline Forest Inventory Consultants Ltd.	4	April 2002
Analysis of Road and Landing Impacts on Timber Supply within the Lakes Forest District (#7 in series)	Timberline Forest Inventory Consultants Ltd.	8	May 2002
Collecting Data on Operational Adjustment Factor (1) Values in Conjunction with Silviculture Surveys (#8 in series)	Laing & McCulloch Forest Management Services Ltd.	4	April 2002
Mountain Pine Beetle Green Attack Detection (#10 in series)	Earth Imaging Inc.	4	April 2002
Cruise Plot Analysis Preliminary Report (#16 in series)	J.S. Thrower & Associates Ltd.	4	March 2003
Development of Additional BatchTIPSY Output (#17 in series)	Tesera Systems	4	April 2003
OAF 1 Analysis for the Bulkley, Morice and Lakes Timber Supply Areas (#19 in series)	Laing & McCulloch	4	April 2003
Problem Forest Type Rehabilitation Trial (2002) (#20 in series)	David Yole, M.Sc., P.Ag.	4	April 2003
Mountain Pine Beetle Management: Decision Support System Tools Analysis (#22 in series)	R&S Rogers Consulting Inc.	4	April 2003
Analysis of Low Site Polygons (#24 in series)	MountainView Silviculture Ltd.	4	May 2003
Lakes Timber Supply Area Predictive Ecosystem Mapping (#27 in series)	Laing & McCulloch	2	May 2003

Project Summaries - Ecosystem Management	Author	# Pages	Publication Date
Successional Pathways (#9 in series)	ESSA Technologies Ltd.	4	April 2002
Calving and Post-calving Habitat Use by the Tweedsmuir-Entiako Caribou Herd in the Morice Forest District (#11 in series)	Ecoscape Biological Consultants	4	April 2002
A Comparison of Coarse Woody Debris in Harvested and Unharvested Sites (#12 in series)	Ruth Lloyd	8	May 2002
Groundwater Monitoring (#14 in series)	Freshwater Resources	4	April 2002
The Response of Caribou Terrestrial Forage Lichens to Forest Harvesting and Mountain Pine Beetles in the East Ootsa and Entiako Areas (#15 in series)	Caribou Ecological Consulting & Mniun Ecological Research	8	March 2003
Evaluation of Aquatic Ecosystem Integrity through Biomonitoring (#21 in series)	Gartner Lee Ltd.	8	April 2003
Species-Habitat Modeling for the Morice & Lakes IFPA (#26 in series)	Ardea Biological Consulting	8	May 2003
Inventory of Mountain Goats in Non-Alpine Habitats in the Morice & Lakes Forest Districts (#29 in series)	Wildfor Consultants Ltd.	8	June 2003
Status and Nesting Requirements of the Northern Goshawk in the Morice & Lakes Forest Districts (#30 in series)	Wildfor Consultants Ltd.	12	June 2003
Habitat Use by Mountain Goats Near Nadina Mountain (#31 in series)	Ardea Biological Consultants	8	June 2003
A Comparison of Coarse Woody Debris in Harvested and Unharvested Sites (2002) (#32 in series)	Ruth Lloyd	8	June 2003

Please visit www.moricelakes-ifpa.com to download PDF files of M&L IFPA project summaries. Full reports and SFM planning documents are also available at the site.

Morice SPT Members

Mike Buirs	Ministry of Forests
Jim Burbee	Chair
Glenda Ferris*	Local Environmental Activist
Shirley Hamblin*	Bulkley Valley Cattlemen
Jim McCormack	Canadian Forest Products
Caroll Morey*	Tourism and Recreation
Rob Payne*	Industrial, Wood and Allied Workers of Canada
Ingrid Russell	Ministry of Forests
Sharon Smith*	District of Houston
Melissa Todd	Houston Forest Products
Laurence Turney	Ministries of SRM/MWLAP
Jaret van der Giessen	Houston Forest Products
Carl Vandermark	Canadian Forest Products
Steve Voros	Tesera Systems Inc.
Dwight Scott Wolfe	Tesera Systems Inc.

Lakes SPT Members

Jim Burbee	Chair
Bill Chapman	Babine Forest Products
Miles Fuller*	LRMP Co-Chair, Lakes District Woodlot Association
Manuel Kindt	L&M Lumber Ltd.
Jim McCormack	Canadian Forest Products
Tom Olafson	Fraser Lake Sawmills
Jim Richard	Ministry of Forests
Russ Skillen*	Lakes District Trappers Association
Judy Stratton*	Northern Ecology Watch
Laurence Turney	MSRM and MWLAP
Carl Vandermark	Canadian Forest Products
Steve Voros	Tesera Systems Inc.
Mike Watson	Ministry of Forests
Dwight Scott Wolfe	Tesera Systems Inc.

*Also a member of the broader IFPA Public Advisory Group



For more information on the Morice & Lakes IFPA, contact:

Jim Burbee, RPF, IFPA Manager
c/o Tweedsmuir Forest Ltd.
3003 Riverview Road
Prince George, BC V2K 4Y5
Ph: 250-564-1518
Fax: 250-562-1518
Email: venturefc@telus.net
Web site: www.moricelakes-IFPA.com